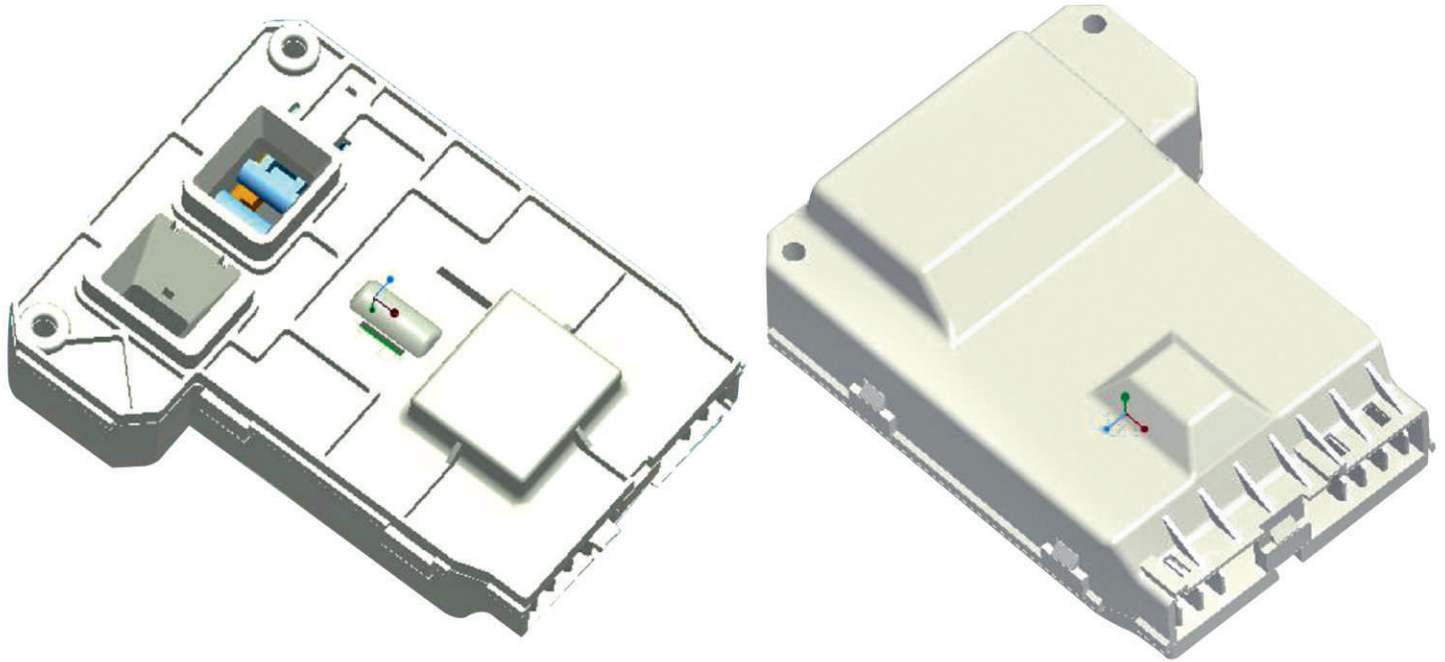
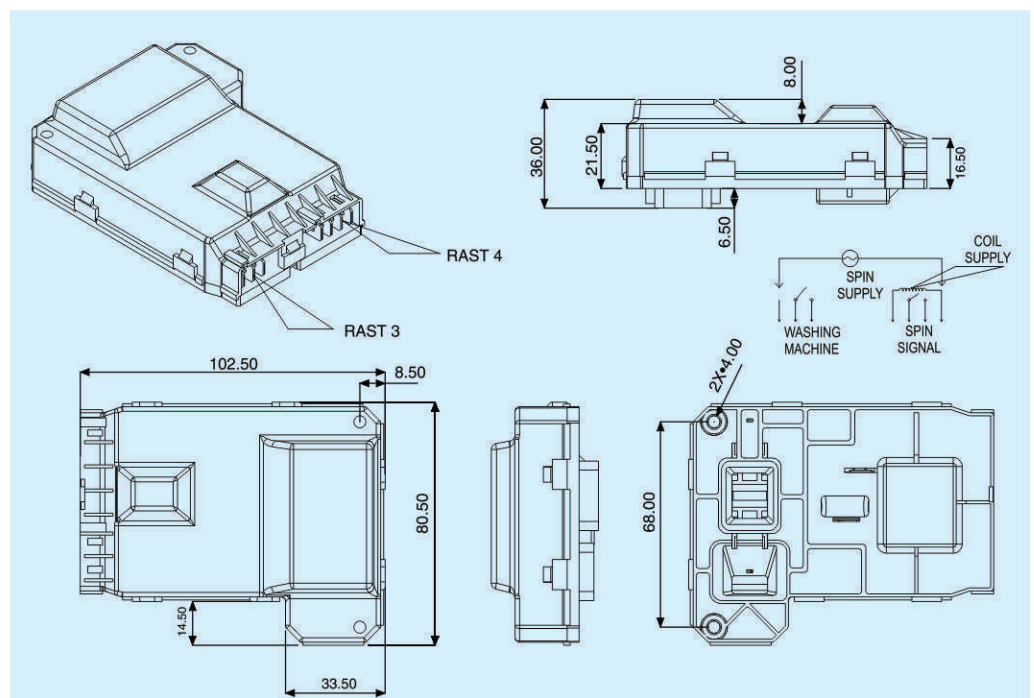


DOOR LOCK



DOOR LOCK

Applications
Washing Machine



DOOR LOCK

S.No.	Test	Specification
Performance Test		
1.	Voltage	95-132V, 50/60 Hz
2.	Current rating	16A
	Door switch	
	Auxilliary Switch	0.045A
3.	Nosie level	No chatter in solenoid
4.	Time Delay (spin coast down)	Min. 70sec.
		Max. 720 sec. (12 min)
5.	Temp rise	95°C
6.	Retention force of lock in locked state	Min 50lbs
7.	Retention force of lock in unlocked state	Max. 15 lbs
8.	Insertion force of striker	1.85 - 2.5 lbs
9.	Extraction force of striker	3.30 - 8.10 lbs
10.	Locking impact strength test of slider and lock	Withstand 3lbs from 2"
Safety Test		
11.	HVAC	1500V AC/2Sec/1 mA
12.	Insulation resistance	>10MΩ
13.	Insulation class	B
14.	Locking coil resistance@25°C	1325 ± 100Ω
15.	Wrong connection protection	Protected
16.	Fire Resistance	UL-94-V0
17.	Surge test	As per customer spec
Life Testing		
18.	Slider and lock life 15,000 cycles	
19.	Main wash locking mechanical life	15,000 cycles (60min on & 5 min off)
20.	Delay mechanism life	15,000 cycles
21.	Motor switch life	20,000 cycles
22.	Aux switch life	30,000 cycles
Environmental Test		
23.	Humidity test	95%@40°C
24.	Salt spray test	5% salt solution for 96 hours
Mouting feature & Appearance		
25.	Screw hole size for mounting	4mm
26.	Terminal	250 series male faston
27.	Screw thread type	# 10 sheet metal
28.	Surface finish (visible surface)	Matte
29.	Color (visible surface)	Light grey
30.	Material flammability	UL-94-V0

OPERATIONS:

- A. The insertion force of striker is 1.85-2.5 lbs and the extraction force is 3.3-8.1 lbs.
- B. Part has a mechanical delay feature to prevent the door from being opened while the inner spin basket is spinning.
- C. The part disables the machine in the event the coil fails.
- D. The part is capable of sensing when the door is open and closed. It allows operation only when the door is closed.
- E. Electrical Contacts are capable of handling vibrations while under power.
- F. Under normal operating conditions, the contacts of the switch shall be allowed to close only when the door striker(catch) is "fully inserted first and then the coil is energized". The contacts open for the following conditions:
- the coil is de-energized.
 - the coil is energized and the striker (catch) is not in place.



MICRO INSTRUMENTS CO.

8,Industrial Area, Ambala Cantt India - 133 006, Phones : +91-171- 2699935/2699529/2698043
Fax : +91-171-2699008/2699221 E-mail: micro1@vsnl.com , Web Site : www.microinstrumentsco.com